

COAL STATUS

PRODUCING

IMPACTED

NO ACTIVITY

COAL HAUL REPORTED

EXTENDED WEIGHT ROUTE

AU

MT

BG

EB

HR

WK

JC

AUDUBON PARKWAY

BERT T. COMBS MOUNTAIN PARKWAY

MARTHA LAYNE COLLINS BLUEGRASS PARKWAY

EDWARD T. BREATHITT PENNYRILE PARKWAY

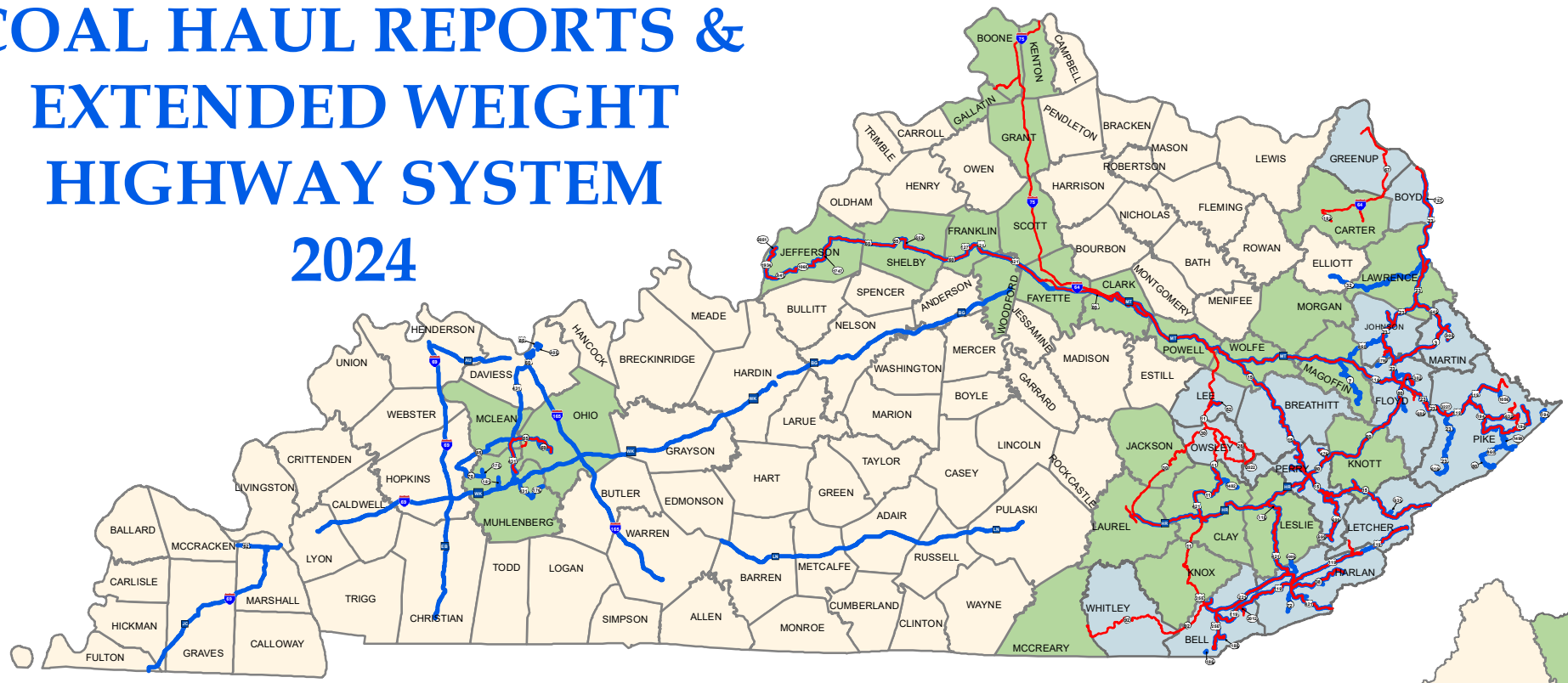
HAL ROGERS PARKWAY

WENDELL H. FORD WESTERN KENTUCKY PARKWAY

JULIAN M. CARROLL PARKWAY

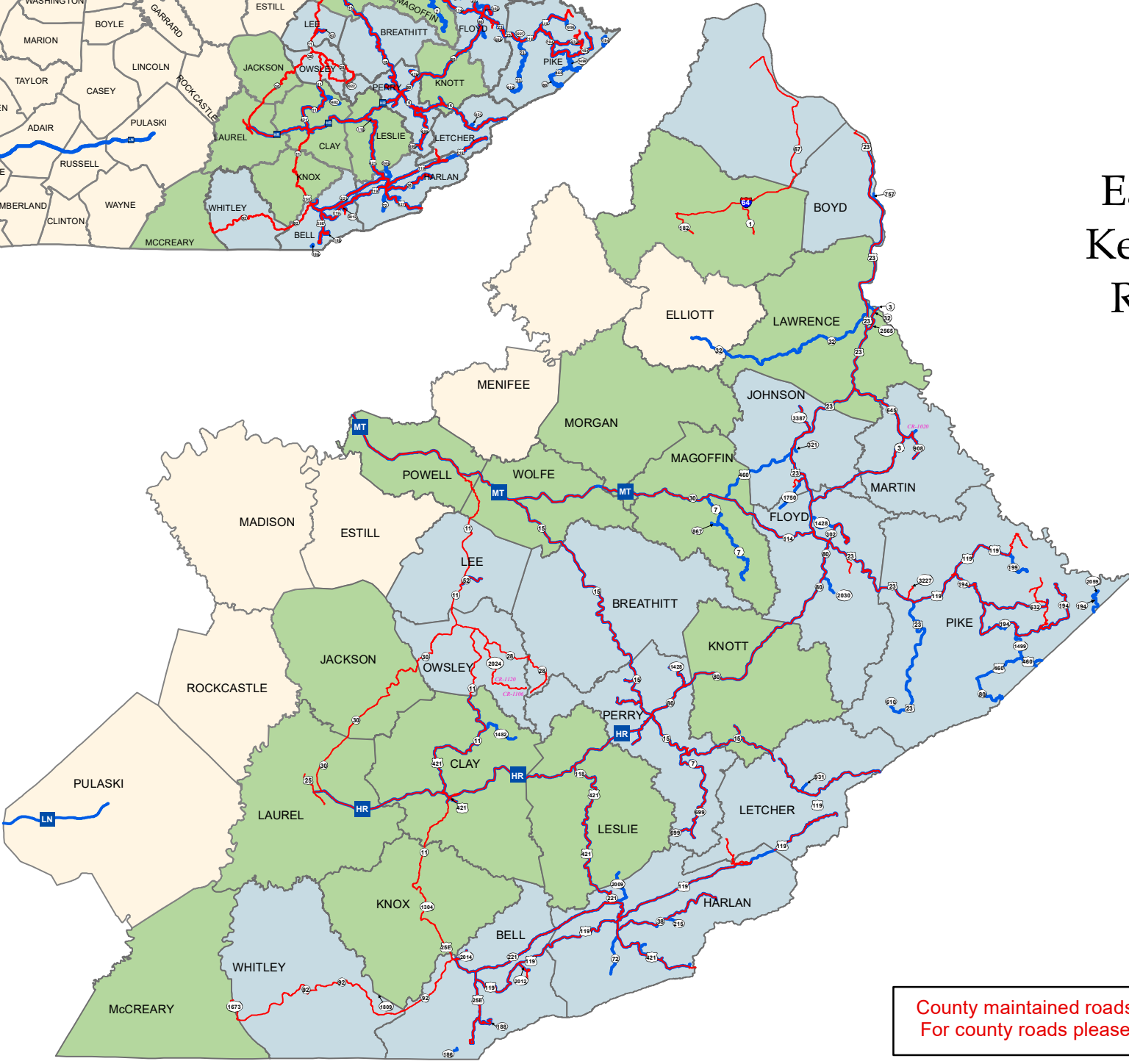
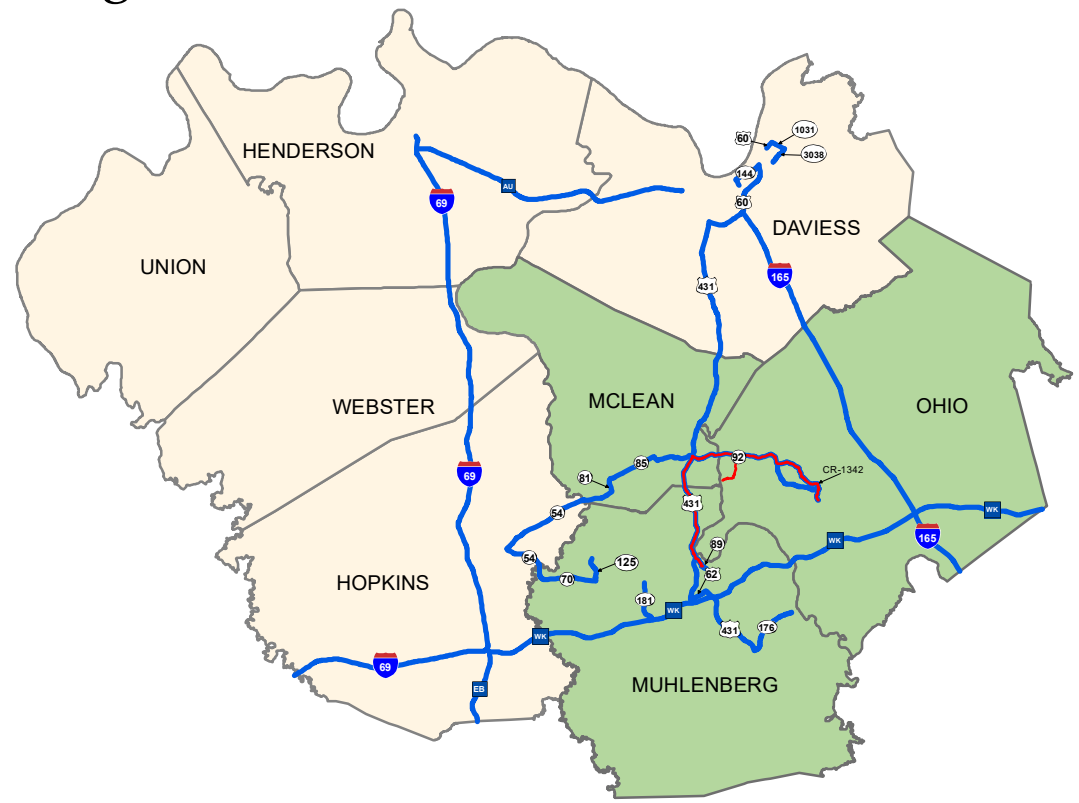
COAL HAUL REPORTS & EXTENDED WEIGHT HIGHWAY SYSTEM

2024



Eastern Kentucky Region

Western Kentucky Region



Structure Limits

A route designated as Extended Weight (EW) may have structures that limit the allowable tonnage. Refer to the system listing which is available from the KYTC Division of Maintenance at 502-564-4556 or at [http://apps.transportation.ky.gov/His\\_EWBridge/](http://apps.transportation.ky.gov/His_EWBridge/)

Need to Fill a Gap in the Extended Weight System?

Alternate routes not shown on the Extended Weight system may be arranged by contacting the appropriate KYTC District Office (<http://transportation.ky.gov/Pages/Highway-Districts.aspx>)

County maintained roads are not shown. For county roads please see the county